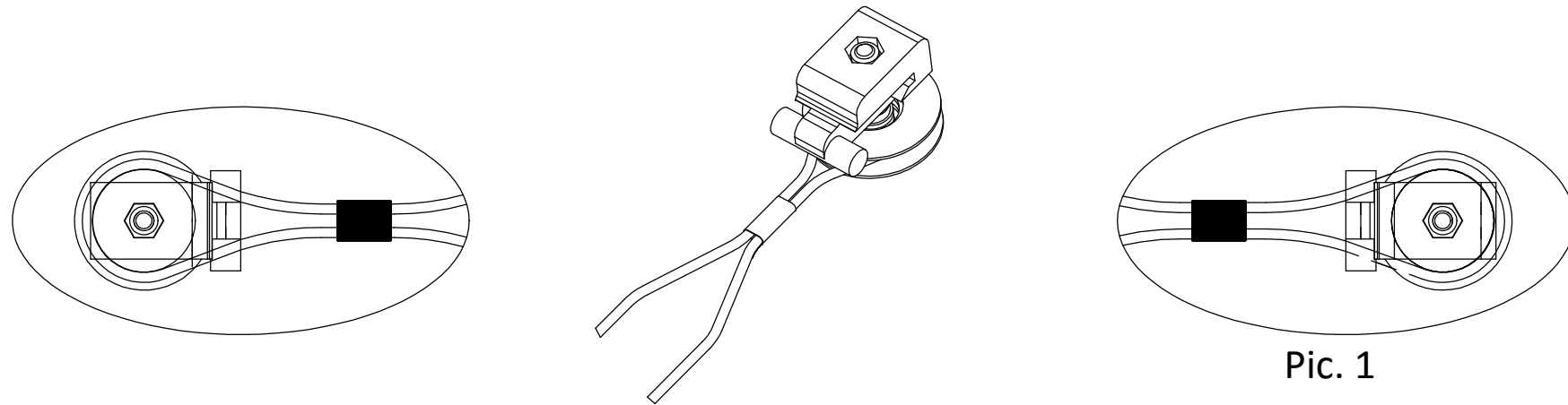
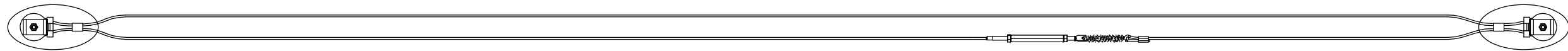


# SIMULTANEOUS OPENING

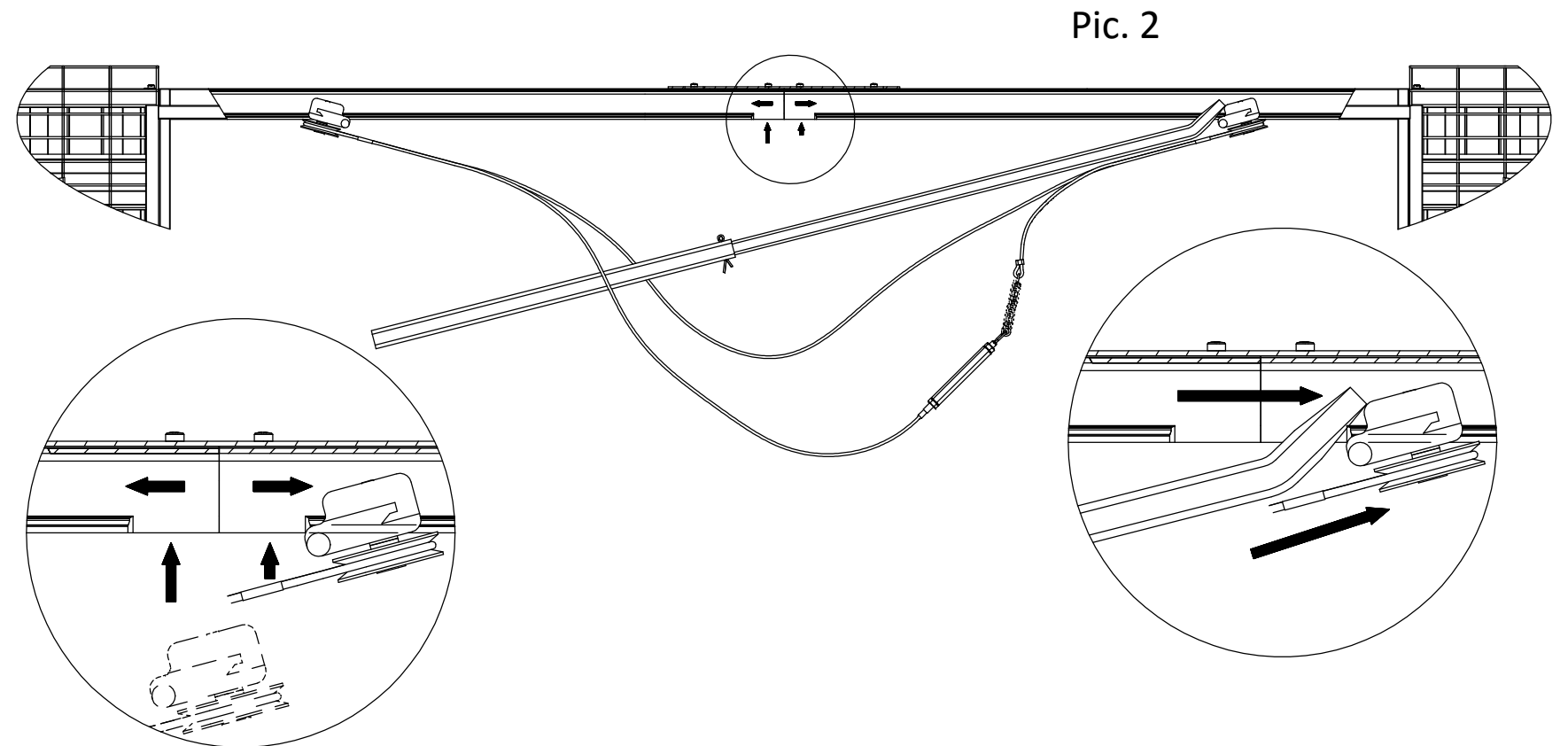


Fix the clear end of the steel cable inside the stopper and clamp. Make sure the tightening screw is at the maximum of its extension. Pass the cable through the pulleys, fixing it with a soft application of adhesive tape close to them. (Pic.1)

Pic. 1

Set the bar supplied and block the two stems through the cotter pin. Insert one pulley at a time inside the eyelet of the rail and drag them through the bar to the bottom of the rail (Pic.2) pulling the cable with the hand to keep it in tension. The pulleys are provided with a special slot to grab on automatically.

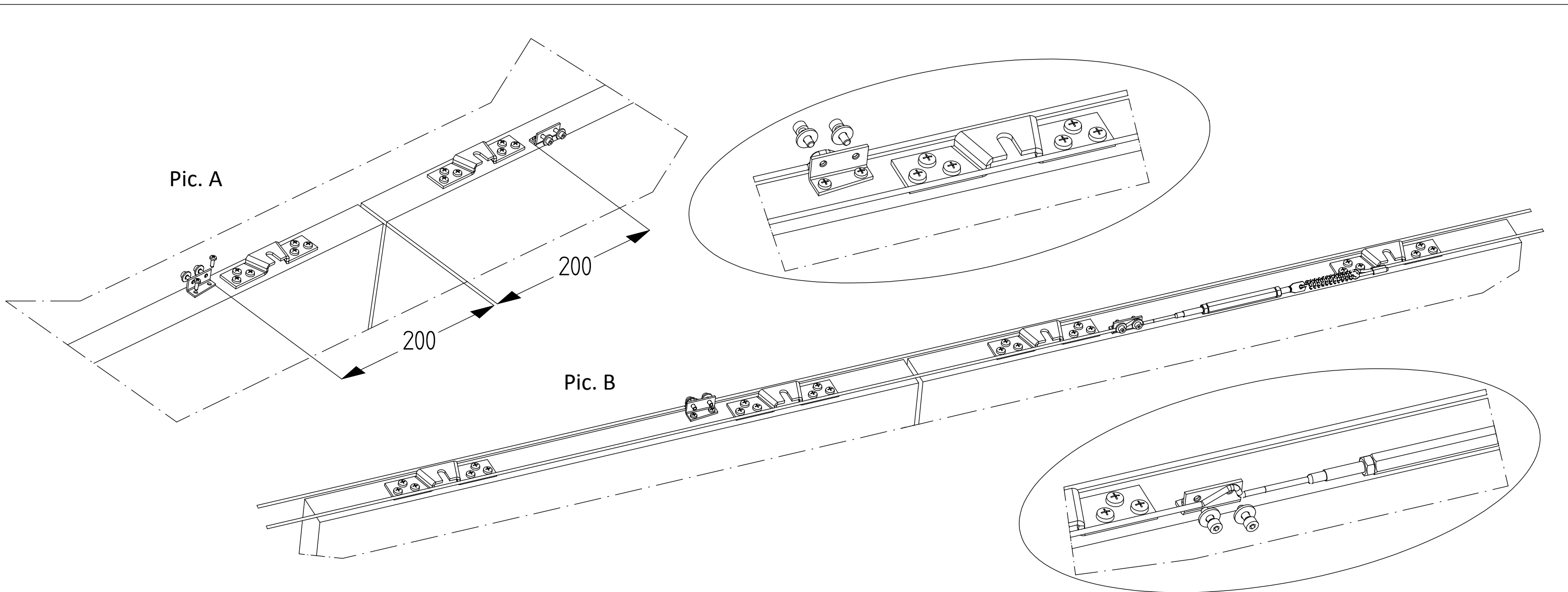
Repeat the same operation for the second pulley, paying attention not to cross the cable. Adjust the tightener so that the spring is in light tension. Tight the two nuts of the tightener.



Pic. 2

# Ermetika<sup>®</sup>

Controtelai per porte a scomparsa



Set the clamps positioning them as in (Pic. A) respecting the quotes in the drawing and install the doors adjusting them accordingly. Once the doors are in closing position and centered in the passage opening, fix the cable inside the angular brackets and tight it through the screws and washers provided. (Pic. B) Repeat the same operation for the second panel. Check the cable tension through the tightener. The cable shall sit in order to allow the tightener to be centered in the passage opening and be hidden when the doors are open.

# Ermetika®

ERMETIKA s.r.l.  
Via Trani, 126  
70051 Barletta (BA)  
ITALY  
Tel. +39.0883/535781  
Fax +39.0883/532164  
www.ermetika.it

The Ermetika s.r.l. declines every responsibility for whatever possible inaccuracy owed to errors of transcript or press and other, and it reserves him the right to improve and/or to modify the products without warning.

Controtelai per porte a scomparsa

**Direct Doors.com®**

Bay 5 Eastfield Industrial Estate, Penicuik, Edinburgh, EH26 8HA, Scotland,  
Telephone: 01968671681, Email: info@directdoors.com